

The PU-Sealer Range

Overview

1. PU-Sealer matt (R 9)
2. PU-Sealer Anti-slip (R 10)
3. PU-Sealer Anti-colour

The PU-Sealer Range

1. PU-SEALER MATT

- Extremely hard wearing, matt permanent 2 component sealer.
- Applied in two coats using the 10mm Aqua-top roller.
- Up to six times greater long-term protection (certified by experts).
- In compliance with the DIN 18 032 standard for sport halls.
- Suitable for all resilient floors (vinyl, linoleum, rubber), with or without factory finish.
- Highly resistant against chemicals and disinfectants (transparent).
- Fully and partially renewable.
- 1 coat resembles 3-4 coats of a traditional hard sealer (e.g. **Secura**).
- Mixing ratio of sealer / cross linker 10:1, working time 4 hrs.

The PU-Sealer Range

2. PU-SEALER ANTISLIP

- Matt, permanent **PU-Sealer** that renders floor surface slip resistance into R10 (certified by the BGIA Standard Institute).
 - for all areas with special requirements for slip resistance.
 - allows an increase in slip resistance for all floors classified as R9.
- Based on PU-Sealer Matt, plus Antislip additive.
 - N.B: Additive is not suitable for conventional hard sealers such as **Secura Hard Sealer**.
 - Additive added on site prior to application of **PU-Sealer**.
- Two coats need to be applied to achieve full slip resistance using the Aquatop roller (10mm).
 - 1st coat of **PU-Sealer Matt** with additive.
 - 2nd coat of **PU-Sealer Matt** without additive.

The PU-Sealer Range

2. PU-SEALER ANTISLIP (*continued*)

- Test method of anti-slip properties of floors according to DIN 51 130.



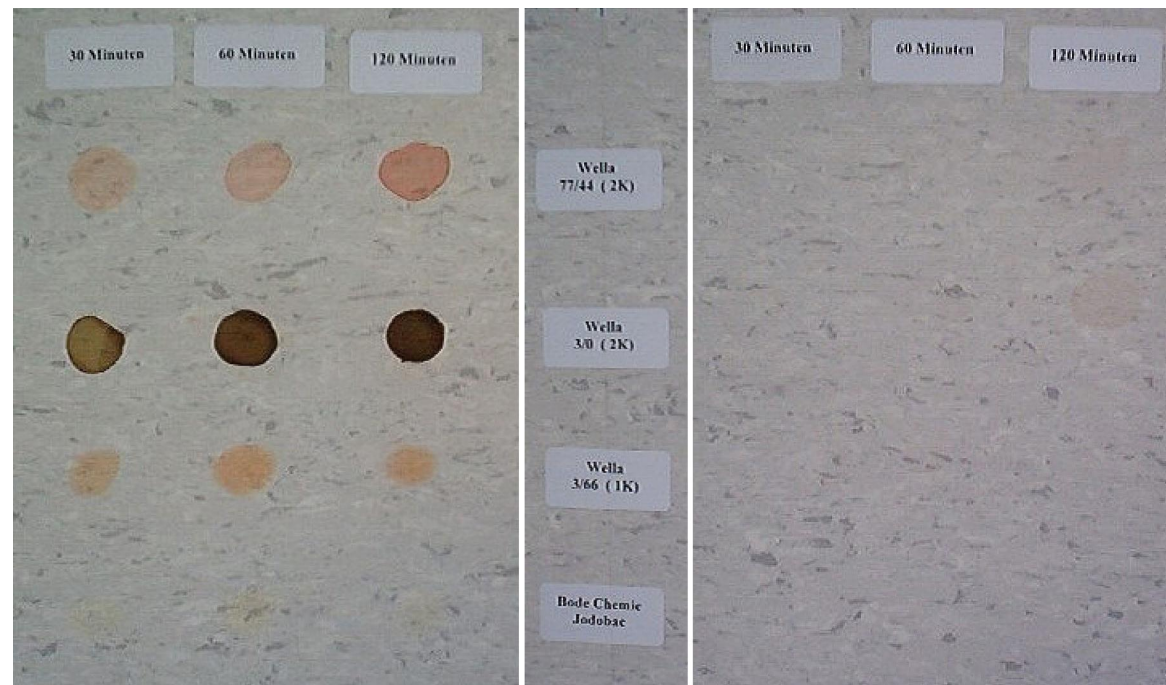
“Walking” on a slippery test floor until it becomes unsafe.

⇒ Measuring of acceptable angle.



The PU-Sealer Range

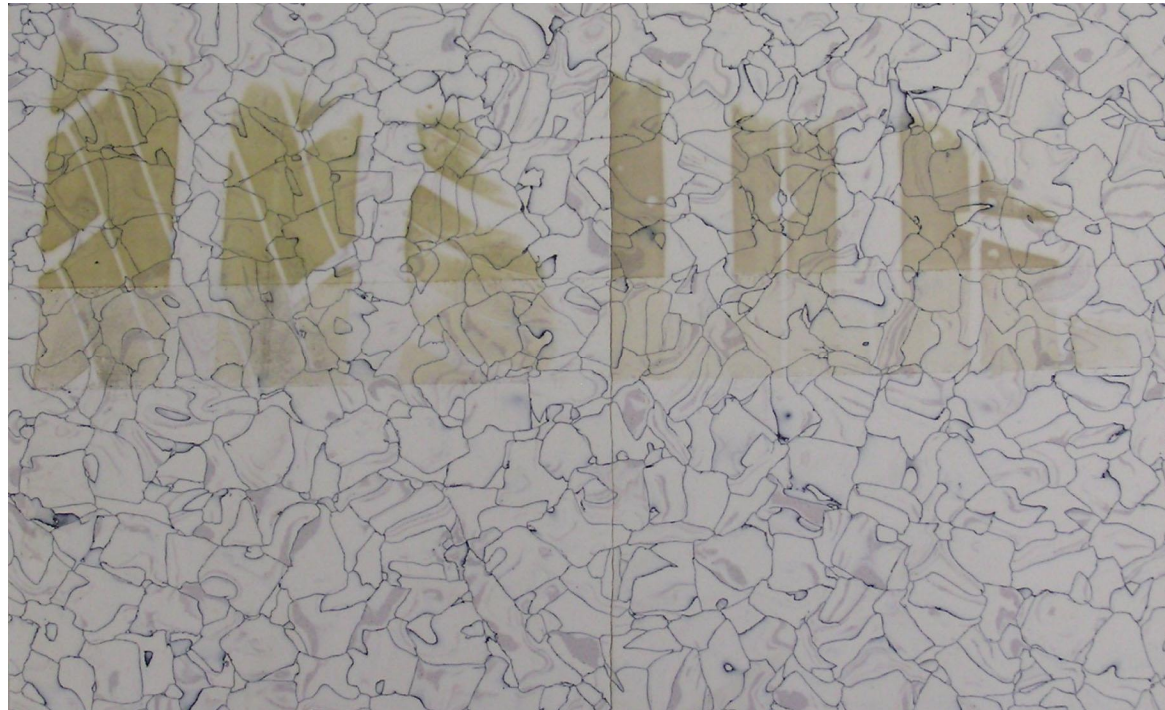
- **3. PU-SEALER ANTICOLOR**
 - Satin, permanent 2 component sealer with high resistance agents colouring agents and disinfectants for example:



- colouring agents/iodine

The PU-Sealer Range

3. PU-SEALER ANTICOLOR *(continued)*



- plasticisers (e.g. from car tyres)

The PU-Sealer Range

3. PU-SEALER ANTICOLOR *(continued)*

- High resistance against migration of colouring agents, disinfectants and plasticisers.
- Fully and partly renewable surface.
- Applied in two coats using the 10 mm Aqua-top roller.
- 1 coat resembles 3-4 coats of a traditional hard sealer (e.g. **Secura**).
- Mixing ratio sealer / cross linker 4:1, working time 1 hour!
 - Mix sealer for every coat!
 - Keep used roller in plastic bag for 2nd coat!