

Premium Office Solutions

SPECTRUM VINYL FLOORING ACCORD

Value Engineered
Flooring Systems

spectrumfloors.com.au

Phone : 1300 786 585

Email : admin@spectrumfloors.com.au



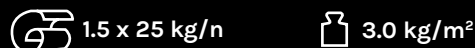
spectrum
quality commercial flooring

BRISBANE | SYDNEY | MELBOURNE | HOBART | ADELAIDE | PERTH



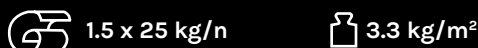
PLAN SYSTEM | ACCORD (40) / PODIUM (43)

Homogenous vinyl sheet flooring



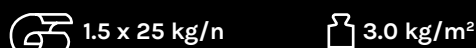
PLAN SYSTEM | ACCORD LUX (46)

Impact-sound insulating sheet vinyl flooring with foam backing



PLAN SYSTEM | ACCORD ESD (47)

Static dissipative sheet vinyl flooring with conductive backing



TECH DATA 2 mm Vinyl Flooring



SPECIFICATION	ACCORD (40) / PODIUM (43)	ACCORD LUX (46)	ACCORD ESD (47)
ABRASION RESISTANCE EN660-2	T	T	T
WEAR RATING EN685	21-43	21-33	31-43
THICKNESS EN428	2.0 mm \pm 0.1 mm	2.9 mm	2.0 mm \pm 0.1 mm
WEIGHT EN430	3000 g/m ²	3300 g/m ²	3000 g/m ²
ROLL LENGTH EN430	10-25 l/m	10-25 l/m	10-25 l/m
WIDTH EN426	150 CM	150 CM	150 CM
FIRE RATING AS/ISO9239-1	CRF 10.2 KW/M ² SDR < THAN 750 % MIN	CRF 10.2 KW/M ² SDR < THAN 750 % MIN	CRF 10.2 KW/M ² SDR < THAN 750 % MIN
RESISTANCE TO EARTH			APPROX. 10 Ω ???
EMISSIONS FLEC	M1	M1	M1

AVAILABLE IN COLOR COORDINATED RANGES

ACCORD PODIUM

Public premises subject to high density traffic -- Department stores, Shops, Schools, and Offices -- the pattern helps conceal traces of wear and soiling.
(Available on special order)

ACCORD LUX

Impact, sound insulating sheet vinyl flooring with foam backing.
Public premises subject to heavy traffic -- Schools, Day Care centers, Age Care homes, Hospitals, Offices and Apartment block staircases.

ACCORD ESD

Semi conductive sheet vinyl. Operating Theaters and other Surgical areas in hospitals, Computer rooms, Telephone exchanges, Ammunition factories, Electronics industries, etc.

Installation

Installation is an important part of a successful floor. To facilitate installation, the bottom of the flooring is embossed. Modern patterns and quality manufacturing ensure that the floor fulfills its purpose and pleases the eye for many years. All product should be installed in accordance with BS8203:2001, detailed laying instructions and adhesive recommendations are available on request.

Maintenance

Daily maintenance should be performed with a damp or wet cloth, depending on how soiled the floor is. Large areas should be cleaned with a combination machine using red or beige pads. Because of the PUR treatment, Podium and Accord flooring do not need to be polished after installation. ESD should be sealed and polished.

When necessary, the most heavily worn areas of the floor should be polished using water emulsion polish; apply one two thin coats. Detailed maintenance instructions are available on request.

Complimentary technical advice and sample service available | For local personal service phone call 1300 786 585
Please inquire with your Spectrum representative to ensure material availability | Stock Australia subject to availability

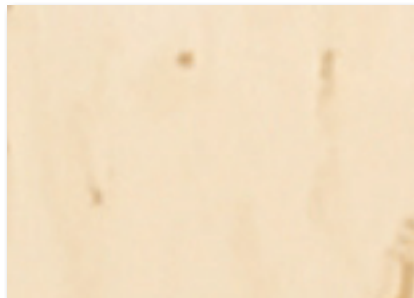
40229 - INDENT



40221 - INDENT



40223 - STOCK



40239 - INDENT



40242 - INDENT



40224 - INDENT



40244 - INDENT



40243 - INDENT



40241 - STOCK



40228 - INDENT



40266 - INDENT



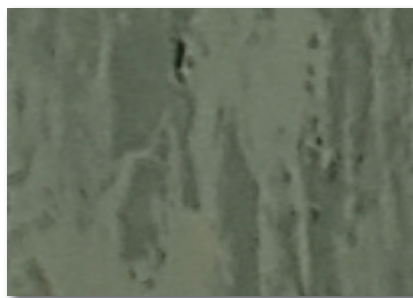
40265 - INDENT



40228 - INDENT



40266 - INDENT



40265 - STOCK



40220 - STOCK



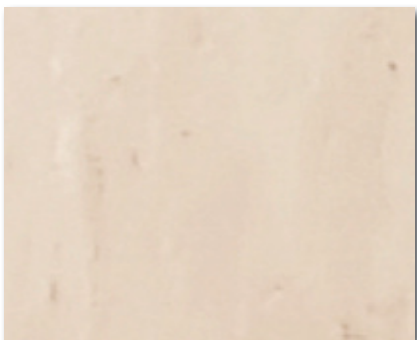
40212 - STOCK



40201 - INDENT



40206- INDENT



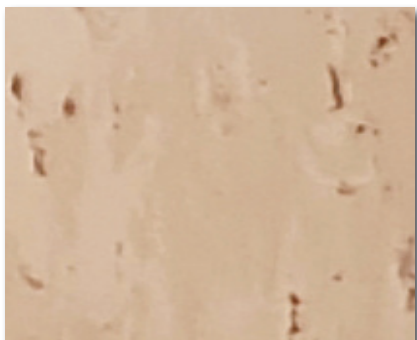
40213 - STOCK



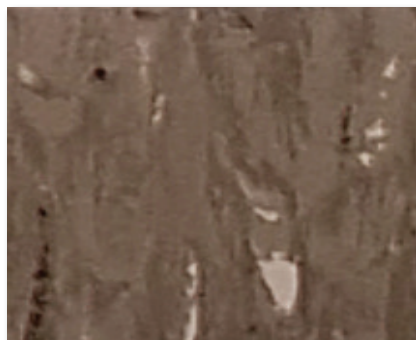
40202- STOCK



40207 - INDENT



40214 - INDENT



40203 - INDENT



40254- INDENT



40251 - INDENT



40204- STOCK



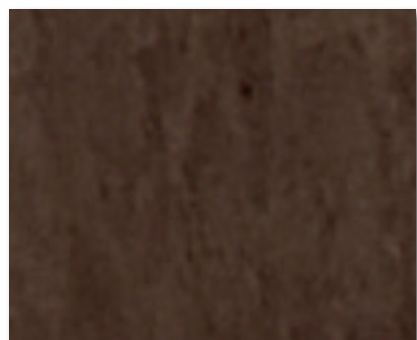
40264 - INDENT



40261 - STOCK



40215 - INDENT



For more information visit
spectrumfloors.com.au

Head Office and Dispatch Center
8 Selgar Avenue,
TONSLEY South Australia 5042

Phone : 1300 786 585

Email : admin@spectrumfloors.com.au

