

Premium Office Solutions

SPECTRUM VINYL FLOORING SERIES 2

Value Engineered
Flooring Systems

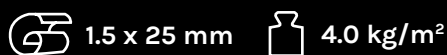
spectrumfloors.com.au
Phone : 1300 786 585
Email : admin@spectrumfloors.com.au

 **spectrum**
quality commercial flooring

BRISBANE | SYDNEY | MELBOURNE | HOBART | ADELAIDE | PERTH

PLAN SYSTEM | SERIES 2

High performance flexible wall covering



TECH DATA

2 mm Vinyl Flooring



SPECIFICATION			CLASSIFICATION		
CONSTRUCTION	Luxury Vinyl Tile with iGuard Surface		BINDER CONTENT	EN ISO 10582	Type 1
PLANK SIZE - WOOD	EN ISO 24346	186 x 1220 mm	EUROPEAN CLASSIFICATION	EN ISO 10582	Class: 33/42
PLANK SIZE - STONE	EN ISO 24346	305 x 610 mm	RESIDUAL CLASSIFICATION	EN ISO 24343	Max. 0.1 mm
THICKNESS	EN ISO 2436	2.6 mm	DIMENSIONAL STABILITY	EN ISO 23999	Max. 0.15 %
WEAR LAYER	EN ISO 24340	0.55 mm	CURLING	EN ISO 23999	Max. 2 mm
TOTAL WEIGHT	EN ISO 23997	4.0 kg/m			
PERFORMANCE					
ABRASION GROUP	MSZ EN 660-1	Class: T	HYGIENE	Bacterial Resistant	
FIRE RESISTANCE	EN 13501-1	Class: Bfl-s1	CASTOR CHAIR RESISTANCE	EN 426 / ISO 4918	✓
SLIP RESISTANCE	EN 13893	DS	ENVIRONMENTAL ATTRIBUTES	Solvent and Phthalate Free	
ELECTRICAL PROPERTIES	EN 1816	Max.2 kV / Antistatic	SURFACE TREATMENT	iGuard PUR Surface / East Cleaning	
THERMAL RESISTANCE	ISO 8302	0.014 m²K/W	CONTENT OF PCP	EN 12673	Does not contain
LIGHT FASTNESS	EN ISO 105 - B0	Grade 6	FORMALDEHYDE	ENV 717-1	E1 (no emission)
CHEMICAL RESISTANCE	EN ISO 26987	✓	VOC		Pass
	ASTM F925	✓	CE MARKING	EN 14041	✓

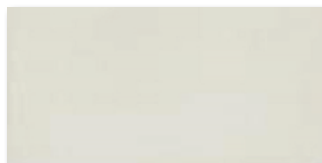
Installation | Correct installation is an important part of a successful project. To facilitate the installation the underside of the flooring is sanded. All products should be installed in accordance with BS 8203-2001 and good trade practice. Detailed laying instructions and water based non toxic adhesive recommendations are available on request.

Maintenance | Easy maintenance using environmentally safe materials to high European standards should be performed dependent on site conditions. Detailed cleaning instructions are available for each product on request.

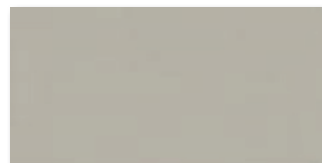
S610 White



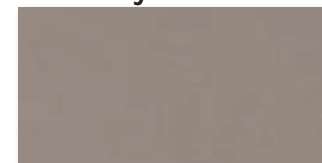
S611 Mist



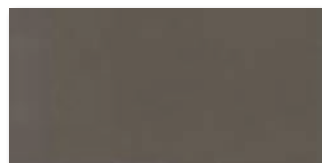
S612 Dusk



S614 Grey



S618 Charcoal



S622 Beige



S624 Coffee



S628 Terracotta



S670 Black



Complimentary technical advice and sample service available | For local personal service phone call 1300 786 585
Please inquire with your Spectrum representative to ensure material availability | Allow 8-10 weeks delivery

For more information visit
spectrumfloors.com.au

Head Office and Dispatch Center
8 Selgar Avenue,
TONSLEY South Australia 5042

Phone : 1300 786 585

Email : admin@spectrumfloors.com.au



© Copyright September 2020 | Copyright Spectrum Floors September 2020 |
This information is correct at the time of printing 01/09/2020 but the manufacturer reserves the right to carry out modification aimed at product improvement without notice.

NOTE : Due to manufacturing limitations there may be variations between the colors of actual flooring and samples images in this brochure.