

Premium Office Solutions

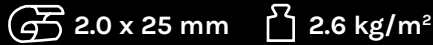
# SPECTRUM VINYL FLOORING SILENCE

Value Engineered  
Flooring Systems

[spectrumfloors.com.au](http://spectrumfloors.com.au)  
Phone : 1300 786 585  
Email : [admin@spectrumfloors.com.au](mailto:admin@spectrumfloors.com.au)

 **spectrum**  
quality commercial flooring

BRISBANE | SYDNEY | MELBOURNE | HOBART | ADELAIDE | PERTH



## TECH DATA

### 2 mm Vinyl Flooring



TECHNICAL PARAMETER	STANDARD	RESULT	TECHNICAL PARAMETER	STANDARD	RESULT
DESCRIPTION			CLASSIFICATION		
CONSTRUCTION		Heterogeneous	EUROPEAN CLASSIFICATION	EN 685	Class:34/42
TOTAL THICKNESS	EN ISO 24346	3.2 mm	RESIDUAL CLASSIFICATION	EN ISO 24243	max. 0.2 mm
WEAR LAYER THICKNESS	EN ISO 24340	0.7 mm	DIMENSIONAL STABILITY	EN ISO 23999	max. 0.2 %
WIDTH OF ROLL	EN ISO 24341	2m	LIGHT FASTNESS	EN ISO 105-B02	grade 6
LENGTH OF ROLL	EN ISO 24341	25 lm			
TOTAL WEIGHT	EN ISO 23997	2.6 kg/m <sup>2</sup>			
PERFORMANCE					
ABRASION GROUP	MSZ EN 660-1	Class: T	HYGIENE	Bacterial Resistant	
FIRE RESISTANCE	EN 13501-1	Class: Bfl-s1	SURFACE TREATMENT	X-PUR	
	BS 476	Class: 1			
	Gost 30402-94	G1			
IMPACT SOUND REDUCTION	EN ISO 717-2	19 DL <sub>w</sub> (dB)	ANTIBACTERIAL & FUNGICID TREATMENT	graboSAN	
SLIP RESISTANCE	DIN 51130	R10	ENVIRONMENTAL ATTRIBUTES	Phthalate-, solvent heavy metal free product	
ELECTRICAL RESISTANCE	EN 1815	< 2 kV	SEAMING METHOD	Hear or cold weld	
	EN 1081	≤ 10 <sup>9</sup> Ω			
CHEMICAL RESISTANCE	ASTM F 925	✓	WARRANTY	10 years	
BACTERIAL RESISTANCE	EN ISO846:1999	✓	CE MARKING	EN 14041	✓
CASTOR CHAIR RESISTANCE	EN 425	✓			

## Installation

Correct installation is an important part of a successful project. To facilitate the installation the underside of the flooring is sanded. All products should be installed in accordance with BS 8203-2001 and good trade practice. Detailed laying instructions and water based non toxic adhesive recommendations are available on request.

## Maintenance

Easy maintenance using environmentally safe materials to high European standards should be performed dependent on site conditions. Detailed cleaning instructions are available for each product on request.

383-00-651-275



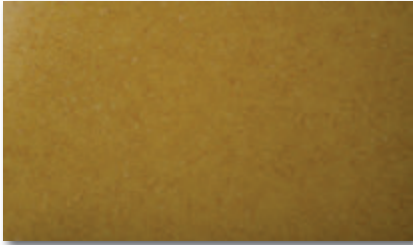
383-00-661-275



383-00-653-275



383-00-664-275



383-00-657-275



383-00-665-275



383-00-659-275



383-00-667-275



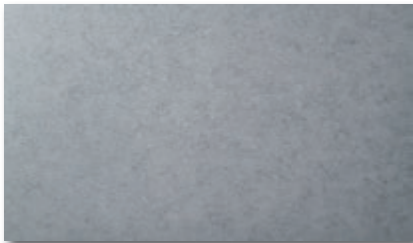
383-00-669-275



383-00-675-275



383-00-671-275



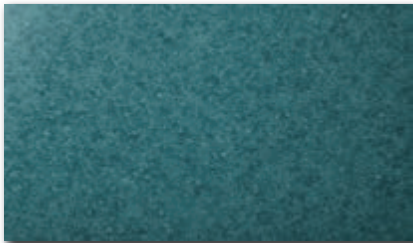
383-00-677-275



383-00-672-275



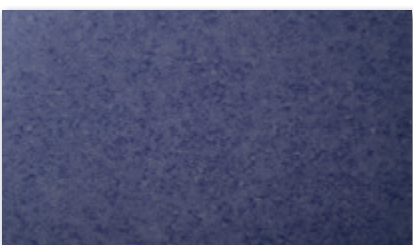
383-00-665-275



383-00-674-275



383-00-684-275



383-00-687-275



383-00-689-275



For more information visit  
[spectrumfloors.com.au](https://spectrumfloors.com.au)

Head Office and Dispatch Center  
8 Selgar Avenue,  
TONSLEY South Australia 5042

**Phone** : 1300 786 585

**Email** : [admin@spectrumfloors.com.au](mailto:admin@spectrumfloors.com.au)



© Copyright July 2020 | Copyright Spectrum Floors July 2020 | This information is correct at the time of printing 01/07/2020 but the manufacturer reserves the right to carry out modification aimed at product improvement without notice.

NOTE : Due to manufacturing limitations there may be variations between the colors of actual flooring and samples images in this brochure.