

LAVA RUBBER FLOORING

Stone effect embossed surface

Lava is highly resistant to stress and abrasion. It offers great noise insulation and has a surface treatment that improves performance and reduces the need for cleaning and maintenance. Made from environmentally friendly materials, there are 20 colours available.



Installation

Correct installation is an important part of a successful project. To facilitate the installation the underside of the flooring is sanded. All products should be installed in accordance with AS1884-2021 and good trade practice. Detailed laying instructions and water based non toxic adhesive recommendations are available on request.

Maintenance

Easy maintenance using environmentally safe materials to high European standards should be performed dependent on site conditions. Detailed cleaning instructions are available for each product on request.



TECHNICAL DATA

3mm or 5mm Rubber Flooring



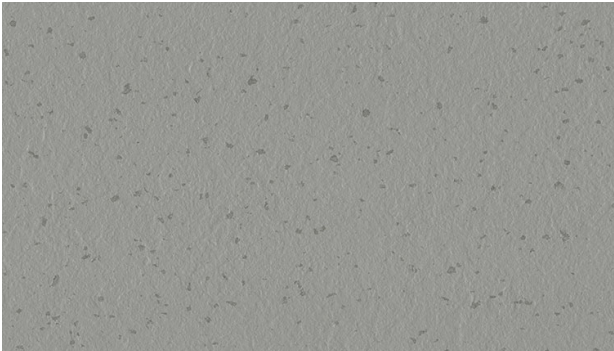
CHARACTERISTICS	REQUIREMENTS	LAVA	X-ELASTIC
Weight		4.7 kg/m ²	5.3 kg/m ²
Roll Size		10 x 1.9m	
Thickness		3 mm	5 mm
Hardness (Shore A) ISO 7619	≤ 75	90	85
Residual Indention EN 433	≤ 0.15 ≤ 0.20 ≤ 0.25	0.09 mm	0.2 mm
Abrasion Resistance ISO 4649 (Met. A-5n)	≤ 250	150 mm ³	160 mm ³
Dimensional Stability EN 434	0.40 max	0.30 %	0.30 %
Flexibility EN 435 Met. A (20 Mm)	NO FISSURING	COMPLY	COMPLY
Color Fastness To Artificial Light ISO 105-B02 Met. 3	≥ 6 blue scale, ≥ 3 gray scale	COMPLY	COMPLY
Cigarette Burn EN 1399	Met. A ≥ 4 Met. B ≥ 3	COMPLY	COMPLY
Fire Resistance AS/ISO 9239-1	CRF > 4.5KW/M2 SMOKE DEV 750%	COMPLY	COMPLY
Slip Resistance AS4586-2013		R10	R10
Chemical Resistance EN423		COMPLY	COMPLY
Electrostatic Charge EN 1815		≤ 2 kV	≤ 2 kV
Reduction Of Sound Treading ISO 10140-3		Up to 6 dB (approx.)	Up to 20 dB (approx.)
Castor Chairs EN 425		Suitable for Wheel castors "W" as stated in EN STANDARD 12529 2 pack adhesive is strongly recommended in high stress areas.	



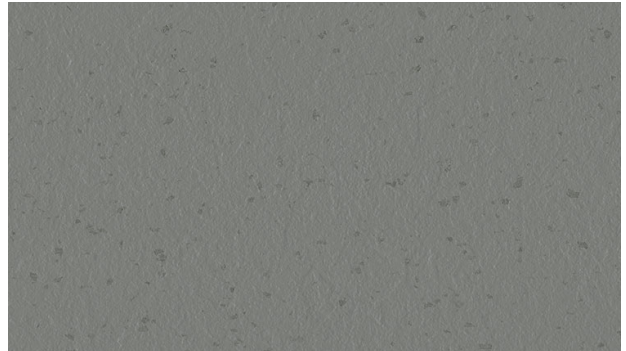
L15



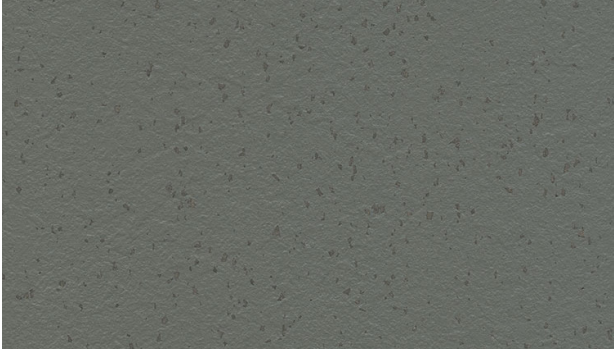
L16



L17



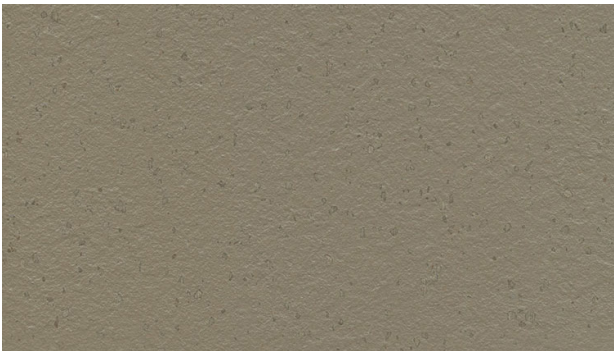
L18



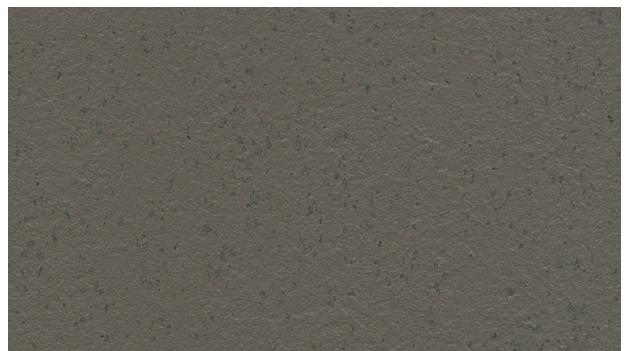
L06



L01



L03



L02



L05



L19

REQUEST A SAMPLE

[Click here](#)



TECHNICAL ADVICE

[1300 786 585](tel:1300786585)

Please inquire with your Spectrum representative to ensure material availability

Stock Australia subject to availability



Head Office and Dispatch Center
8 Selgar Avenue,
TONSLEY South Australia 5042

1300 786 585
admin@spectrumfloors.com.au

spectrumfloors.com.au

© Copyright Spectrum Floors

This information is correct at the time of printing 01/10/2022 but the manufacturer reserves the right to carry out modification aimed at product improvement without notice.

NOTE : Due to manufacturing limitations there may be variations between the colors of actual flooring and samples images in this brochure.